



Course Guide 2026-2027



Welcome from the Vice Principal: Higher Education

Hello, I'm Daniel, the Vice Principal of Higher Education here at DN Colleges Group. I am delighted that you are interested in studying at the University Campus North Lincolnshire (UCNL), and very much look forward to showcasing what life is like at our campus.

Since launching as North Lincolnshire's sole higher education facility, we've continued to evolve our offer, so that we can create the next level of opportunities for learners, developing their career prospects, their skills, and their knowledge of the world, and building their confidence and credibility to get on in life.

In 2023, we were delighted to receive the TEF Silver Award for Teaching Excellence; a testament to our unwavering commitment towards delivering the highest standards of education as a collective.



Our Open Events are a great way to get a feel for the learning environment itself, and I do hope you will be able to join us: I would be delighted to invite you to our campus.



Daniel Bown
Vice Principal: Higher Education
DN Colleges Group

Why go anywhere else!

Introduction Contents

Every year, thousands of people change their lives, and improve their career prospects, by embarking on a higher education course. UCNL is a dedicated higher education facility designed to bring those benefits to Scunthorpe and its surrounding area.

UCNL is part of DN Colleges Group, the organisation that also runs North Lindsey College, Doncaster College, and University Campus Doncaster. That means we can bring the best of what we already do – working with people at all ages and stages of their lives to enhance their education – and add a distinctive higher education flavour. We do this by offering courses and working with partners that provide a wide range of possibilities, across a plethora of sectors.

| | |
|---|----|
| TEF | 4 |
| Our Campus | 5 |
| Student Support | 6 |
| Our Courses | 7 |
| Qualification, UCAS Points & Entry Requirements | 8 |
| Animal Welfare Science | 10 |
| Business and Management | 12 |
| Construction | 14 |
| Counselling | 16 |
| Digital | 18 |
| Education and Early Childhood Studies | 20 |
| Engineering | 22 |
| Games Development | 24 |
| Health and Social Care | 26 |
| Medical Bioscience | 28 |
| Mental Health and Wellbeing | 30 |
| Psychology | 32 |
| Special Educational Needs, Disability & Inclusion (SENDI) | 34 |
| Social Science | 36 |
| Sport and Exercise | 38 |
| Teacher Training (Lifelong Learning) | 40 |
| Access to HE & Foundation Diplomas | 42 |
| Higher Apprenticeships | 43 |
| Funding your studies | 44 |
| How to Apply | 46 |
| Commuting to Campus | 47 |
| Course List | 48 |
| Got a question? | 52 |

DN COLLEGES GROUP



Doncaster College



UNIVERSITY CAMPUS DONCASTER



ucnl
University Campus North Lincolnshire



North Lindsey College



Humber Energy Skills Training Academy

TEF

Sterling achievements

At UCNL, we're proud to have been awarded a Silver rating in the latest Teaching Excellence Framework (TEF) – the second-highest rating possible for teaching quality and student experience.

So, what does TEF Silver mean for you?

It means you can expect a consistently high-quality academic experience. Our teaching is not only engaging and up-to-date, but designed to push you further – helping you develop the knowledge, skills, and confidence to succeed in your chosen field.

You'll receive clear, constructive feedback, be assessed fairly, and have access to tailored academic and wellbeing support. And with staff who are passionate about their subjects – and your success – you'll be encouraged to grow both personally and professionally.

We're especially proud of the way we listen to our students. Your voice matters here, and it plays a big part in shaping your learning experience.

At UCNL, we're not just about qualifications – we're about helping you realise your potential, build your confidence, and take the next step with pride.

Whether it's through hands-on learning, real-world projects, or employer-led opportunities, you'll benefit from a learning environment that's built with your future in mind.



Our Campus

Campus life

Whilst studying with us you'll have access to not only your lecturing teams' sector experience but knowledgeable technicians and specialist equipment relating to your course study.

You'll find lecture theatres, teaching rooms, studios, workshops and resources dedicated to your course but beyond these you will have access to a range of on-campus student study and breakout spaces.

Lincolnshire Institute of Technology

As part of DN Colleges Group, University Campus North Lincolnshire is a key member of the Lincolnshire Institute of Technology (IoT). The government has funded several IoTs across the country as part of its ambitions to strengthen productivity, skills and career pathways in the technology industries.

An Institute of Technology is a partnership of employers and education providers within a defined geography, who coordinate the courses they offer and the way they work together around technology subjects. They do this so that people in the area have access to a range of options and pathways that can enhance the area's ability to deliver modern digital, technological, mechanical, and data driven industries, through a well-trained workforce.

UCNL plays a key role in the Lincolnshire IoT 'offer'. First, we provide a variety of higher-level courses as part of the region's IoT portfolio, including engineering and construction options. Second, our classrooms are home to state-of-the-art Industry 4.0 systems and technologies. These enable us to demonstrate to students and employers the emerging ways that factories of the future are functioning, using

smart technology to run more efficiently and intelligently. As our IoT develops we look forward to working with more businesses to inform and support their transition to these new, smarter systems.

Purpose-built Healthcare facilities

If you're enrolled onto one of our Health & Social Care or Mental Health & Wellbeing programmes, time will be spent conducting learning in a bespoke healthcare space.

With the opportunity to carry out medical assessments, conducive to replicating real-world examinations and procedures, you'll learn using the latest cutting-edge industry equipment and technology, under the guidance of our expert pool of tutors.

Student Support

Life isn't always straightforward, that's why at UCNL the student support team are here to help you identify and overcome any barriers you might face during your educational journey, enabling you to get the most from your learning experience.

Support

Transitioning to higher education can be challenging and if you find yourself facing difficulties, we provide tailored, confidential pastoral and wellbeing assistance to support you.

Our approach is personalised, ensuring that you receive the support that best meets your individual needs. We offer a safe space for you to express your feelings and experiences without judgment. Whether you require guidance in coping strategies, stress management techniques, or access to additional resources, our team is committed to helping you regain your balance and focus.

Academic success

We are committed to providing you with all the resources you need to achieve academic success. With our smaller teaching groups, you'll have ample opportunities to ask questions and interact directly with your lecturers, but if you want to improve your writing, referencing, or time management skills, our academic support team are also on hand to ensure that you have all the tools needed to earn the best possible qualifications at UCNL. If you have a long-term condition or impairment that may impact your studies, our team can also provide ongoing support throughout your university experience, from help with applications for Disabled Students' Allowances (DSA), resources for dyslexia, or

assistance navigating our campus, the academic support team is also designed to offer tailored support for students facing specific learning challenges.



Our Courses

Choosing the right course is a big decision, and we're here to make it as simple as possible. With a wide variety of subjects and study options, we'll help you discover your passion and set you on the path to success.

We're proud to work in partnership with some top regional universities and professional awarding bodies, offering an affordable, friendly, and flexible path to earning a certified professional diploma or degree.

For more details on our courses, including entry requirements visit <https://ucnl.ac.uk/subject-areas/>.



Types of study:

Degree Apprenticeships – A work-based degree programme, funded by your employer, combining academic learning with practical, hands-on experience.

Cert HE (Certificate of Higher Education) – A one-year qualification equivalent to the first year of a degree, providing a solid foundation in your subject.

HTQ (Higher Technical Qualification) – A practical, skills-based qualification designed to meet the needs of specific industries, preparing you for employment or further study.

Bachelor's Degree – A full-time programme typically lasting three years, often including an optional placement year for practical experience.

Top-up Degree – A one-year, full-time programme that allows you to build on your foundation degree or HND and progress to a full degree qualification.

Master's Degree – A two-year programme allowing you to specialise in a specific field, enhancing knowledge and skills through coursework, research, and practical applications.

Distance Learning – Study online from anywhere within the UK, with flexible part-time or full-time options, allowing you to learn around your work or personal commitments.

Qualification, UCAS Points & Entry Requirements

Each course has its own entry requirements based on UCAS Tariff points, which vary depending on what you want to study. Some courses may also ask for certain grades in specific subjects.

You'll usually need a Level 3 qualification (like A Levels or a BTEC) and GCSE English Language or Literature and Maths at grade 4/D or above, or an equivalent qualification such as Level 2 Literacy/Numeracy, Key Skills, or an equivalency test. If you've already spent 12-24 months working in your chosen field, you might still be able to apply even without all the standard qualifications as we believe in giving everyone a fair chance, no matter their background or age. So, if you've taken a break from education or don't quite meet the usual criteria, don't worry, we'll look at your experience, motivation, and potential. We're here to help you get where you

want to go, and our team can guide you through the process and discuss your options.

Some courses focusing on Education, Early Childhood Studies, SENDI and Health may also require an enhanced DBS check. If you have any past convictions, our Safeguarding Team will review your application fairly to make sure the course is right for you. It's best to mention this early on so we can support you through the process.

To make sure you've got the latest information, head over to our website and check the exact entry requirements for your chosen course that you will need to meet.



Our website

UCAS Tariff Points

| A Level grade | Tariff points |
|---------------|---------------|
| A* | 56 |
| A | 48 |
| B | 40 |
| C | 32 |
| D | 24 |
| E | 16 |

| BTEC Grade | Tariff points |
|------------|---------------|
| D* D* D* | 168 |
| D* D* D | 160 |
| D* DD | 152 |
| DDD | 144 |
| DDM | 128 |
| DMM | 112 |
| MMM | 96 |
| MMP | 80 |
| MPP | 64 |
| PPP | 48 |

| T Level Grade | Tariff points |
|------------------------|---------------|
| D* | 168 |
| D | 144 |
| M | 120 |
| P (A* - C in the core) | 96 |
| P (D or E in the core) | 72 |

Animal Welfare Science

If you're passionate about animals and aspire to make a meaningful impact on their lives, our Animal Welfare Science courses are your gateway to a fulfilling career. This programme blends scientific knowledge with practical experience, preparing you to advocate for animal welfare across diverse settings.

What you'll study

You'll delve into the biological and behavioural sciences that underpin animal welfare. Core modules include animal health and nutrition, animal behaviour and welfare, and ecology and conservation. You'll gain hands-on experience in our purpose-built animal unit, home to a variety of native and exotic species, allowing you to apply theoretical knowledge in real-world contexts.

Future careers

Graduates are well-equipped for roles such as Animal Welfare Officer, Animal Technician, or positions within animal charities and conservation organisations, and completion of the top-up degree opens doors to advanced careers in research, policy-making, and education.



Animal Welfare Science

Courses

➤ **FdSc Animal Welfare Science** FT PT

➤ **BSc (Hons) Applied Animal Welfare Science Top Up** FT PT

Apply here



Business and Management

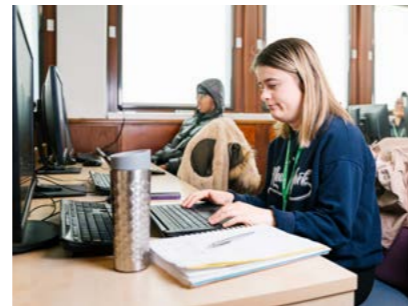
The Business and Management portfolio offers a variety of programmes awarded by the University of Lincoln but delivered locally here at the University Campus North Lincolnshire (UCNL). Our programmes aim to provide students with the opportunity to gain the knowledge and expertise required to help them succeed in their chosen management career.

What you'll study

Here, we're not just about textbooks and lectures; we're about fostering innovative thinkers, strategic leaders, and ethical professionals who will shape the future of business. Our curriculum is designed to challenge you, our faculty is here to inspire you, and our community is ready to support you.

Future careers

Our Alumni have achieved remarkable success after graduating with degrees akin to yours, securing jobs across diverse management sectors including hospitality, logistics, insurance, recruitment, manufacturing, operations, project management, human resources, and retail. They have also advanced their education with further studies such as master's degrees and beyond.



Courses

- **FdA in Management** 
- **Level 5 GMI Management & Leadership Diploma** 
- **Chartered Manager Degree Apprenticeship (CMDA)** 

Apply here 



Construction

At UCNL, we pride ourselves on having a reputation in delivering qualifications that support students to achieve within a learning environment that covers both academic study and practical skills to support your career plans in Construction and the Built Environment with two pathways: Construction and Civil Engineering.

What you'll study

The unit combination for these pathways has been developed through our links with employers, and supports our curriculum offer to enable progression to employment or further academic study in line with professional qualifications. Our team of lecturers possess a wealth of academic and practical knowledge from many years spent in industry.

Future careers

Graduates from our Construction programmes have progressed onto a wide range of roles, including: Architectural Designer, Construction Technician, Design & Build Co-ordinator, Site Project Manager and many more.



Apply here



Courses

- **Civil Engineering Senior Technician Apprenticeship Standard** 
- **Construction Quantity Surveying Technician - Apprenticeship Standard** 
- **Construction Site Supervisor Apprenticeship Standard** 
- **Pearson BTEC HNC L4 in Civil Engineering**  
- **Pearson BTEC HNC L4 in Construction Management for England (Construction Site Supervisor)**  
- **Pearson BTEC HNC L4 in Quantity Surveying for England**  
- **Pearson BTEC HNC in Architectural Technology (HTQ)** 



Counselling

Are you currently working within the mental health sector? Do you want to develop your skills or change career? We are offering an opportunity to undertake a Certificate in Higher Education or BA (Hons) in Integrative Counselling.



What you'll study

Through a combination of theoretical learning and practical application, our programmes are designed to equip students with a comprehensive understanding of various therapeutic approaches and methodologies in counselling. So, whether you're looking to enhance your interpersonal skills, integrate counselling techniques into your current role, or build upon a pre-existing counselling skillset, we'll have the pathway for you.



Future careers

Our programmes will help enable progression to a wide range of jobs within the industry which include; working in charitable organisations, private sector, NHS and prison settings, schools, working in pastoral, trainers and facilitators. It can also provide a pathway to advanced qualifications in counselling, psychology, or social work.



Courses

- Cert HE **Integrative Counselling**
- BA (Hons) **Integrative Counselling**
- Level 2 Award **Introduction to Counselling Skills**
- Cert HE **Understanding Domestic Violence and Sexual Abuse** (Subject to Validation)
- FdA **Understanding Domestic Violence and Sexual Abuse** (Subject to Validation)

Apply here



Digital

Developed with employers, our Digital programmes lead to a Higher Technical Qualification, which is approved by the Institute for Apprenticeships and Technical Education.

What you'll study

By studying with us, you will blend theoretical knowledge with hands-on experience which will prepare you for the real-world challenges faced in industry. Utilising our brand-new, specialist computer labs, you will build practical skills through independent projects, workplace scenarios and research. You will develop industry required behaviours through our assessment methods such as professionalism, adaptability and initiative. Finally, you will gain transferable skills which are essential for higher education or the workplace, such as teamwork,

problem-solving, communication and analytical thinking.

Future careers

Higher Technical Qualifications (HTQs) offer an alternative high-quality route for you to gain the skills and knowledge needed to succeed in your career. With a HTQ in Digital Technologies, you can explore various careers in the rapidly evolving field of technology, such as a Software Developer, Data Scientist, IT Project Manager and more.

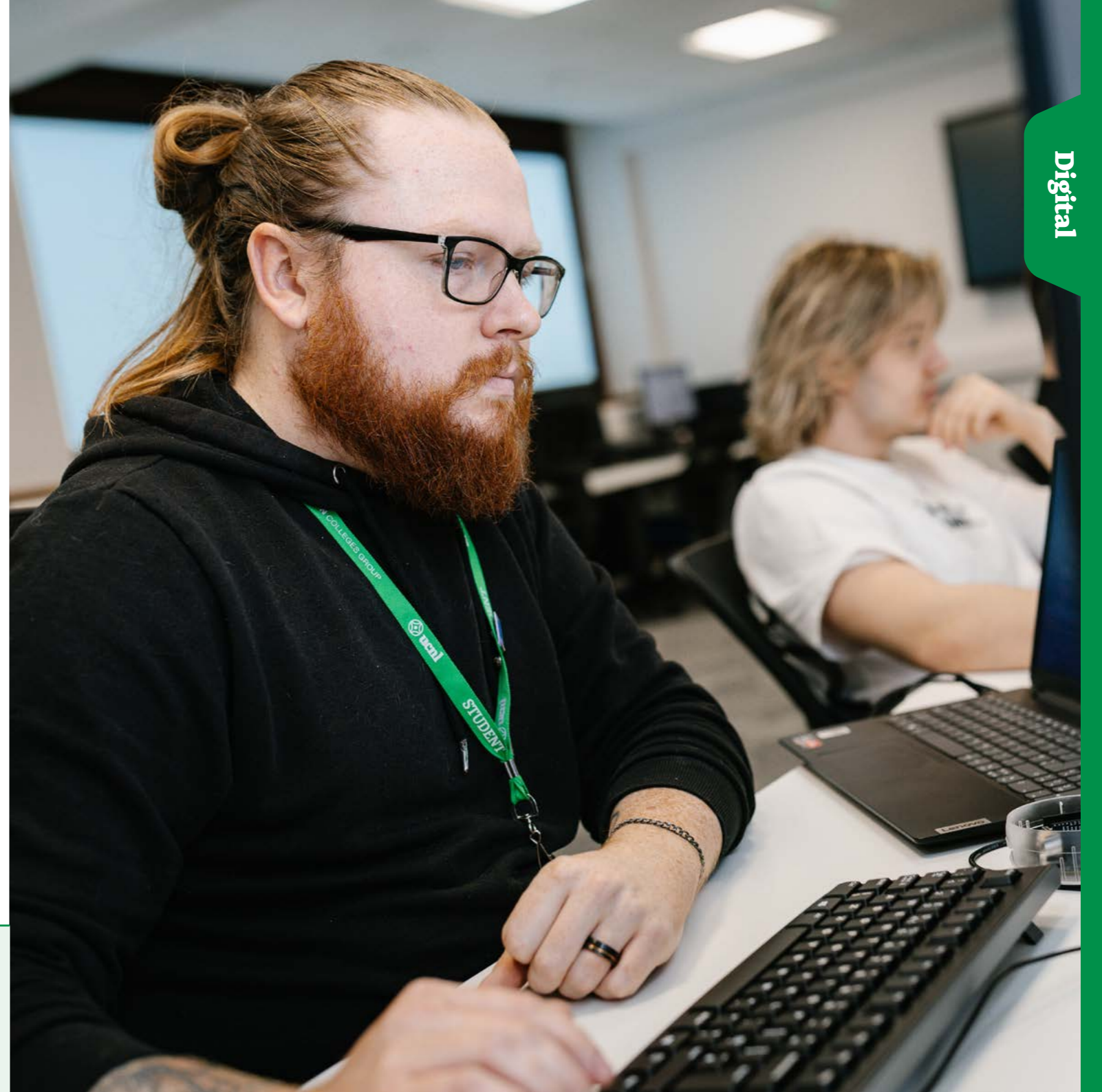


Apply here



Courses

- HNC Digital Technologies - Software Development & Programming Pathway FT PT
- HND Digital Technologies - Software Development & Programming FT PT
- HNC Digital Technologies for England Artificial Intelligence (AI) Solutions and Applications FT PT



Education and Early Childhood Studies

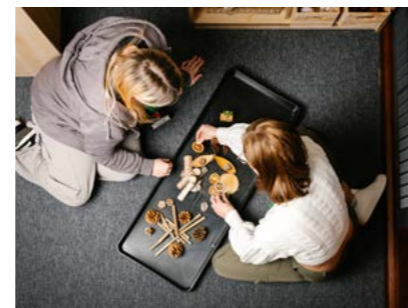
Education and early childhood spans over a short period of rapid development where highly skilled practitioners have the opportunity to enhance children's experiences, resulting in improved outcomes. Our on-campus and distance learning courses cover a wide range of critical and contemporary theories which inform current practice in the field of education and early years. This will enable you to develop the knowledge to support children's learning and development, from birth to 18 years of age.

What you'll study

Our Education and Early Years programmes have a strong emphasis on work-based, competency learning, meaning you'll be able to apply academic study to practice. This could be through your current employment with children or through a placement within an early years or education setting.

Future careers

Careers are varied within the sector and students may take several routes depending on their specific aspirations. Many of our graduates wish to work with children and their families within education, health or care sectors, whereas others may progress into posts within local authorities which could involve the development of local strategy and policy.



Apply here



Courses

- **FdA Children's Learning and Development Distance Learning** **FT**
- **FdA Education and Early Childhood Studies** **FT** **PT**
- **BA (Hons) Early Childhood Studies Top Up Distance Learning** **FT**
- **BA (Hons) Education and Early Childhood Studies Top Up** **FT** **PT**
- **MA Education and Early Childhood Studies** **PT**



Engineering

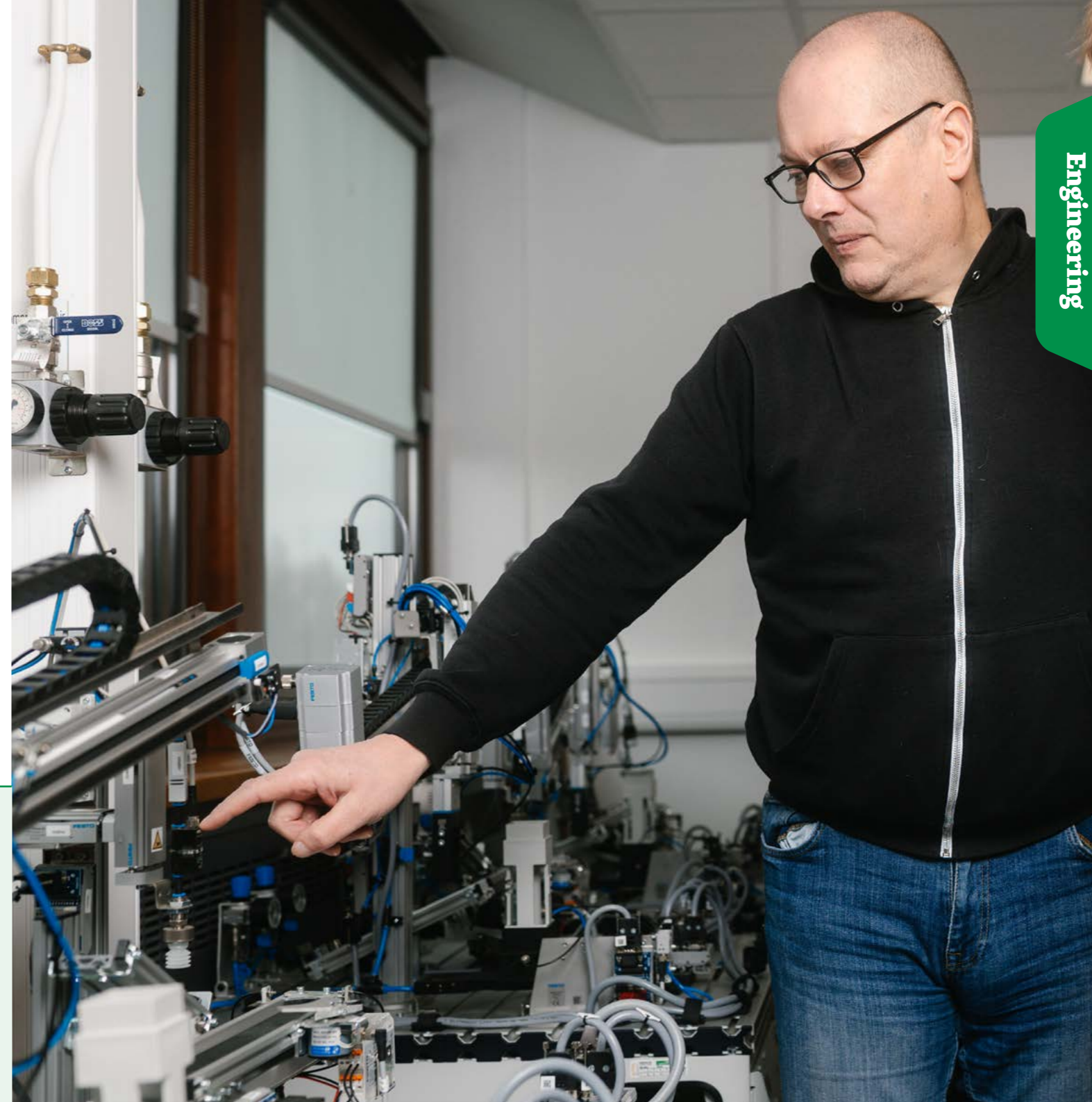
UCNL offer a combined wealth of lecturing experience along with first class Engineering facilities in which to study and complete practical elements that allow you to apply theory to practical applications.

What you'll study

In partnership with the University of Lincoln, we have invested in producing a Lincolnshire Institute of Technology centre of excellence that supports you to study locally. Our Factory of the Future, Automation and Mechatronics laboratories offer an enriching experience that encompasses digital engineering technologies with industry 4.0.

Future careers

Progression from our suite of programmes is varied, with graduates going on to work in areas including manufacturing, the power industry, design, maintenance and much more.



Engineering

Courses

- HNC Electrical & Electronic Engineering for England (HTQ) FT PT
- HNC Engineering for England (HTQ) FT PT
- HNC Mechanical Engineering for England (HTQ) FT PT
- Level 4 Basic Pneumatic Control Systems FT
- Level 4 Electro-Pneumatic Control Systems FT
- Level 4 Introduction to Automation FT
- Level 4 Introduction to Solar Energy FT
- Level 4 Introduction to Wind Energy FT
- Pearson BTEC Level 4 Higher National Certificate in Operations Engineering for England FT
- HND Electrical & Electronic Engineering for England (HTQ) PT
- HND Engineering for England (HTQ) PT
- HND Mechanical Engineering for England (HTQ) PT
- Engineering Manufacturing Technician - Apprenticeship Standard

Apply here



Games Development

Feed your passion for games development and develop your own individual design identity while exploring your own abilities in your chosen creative field with one of our Games Development courses. We've invested in state-of-the-art digital suites, workshops, and studios where you can develop your skills and explore your creativity. Many of our programme areas have dedicated studio spaces located throughout the building; both individual and collaborative open spaces to reflect professional working environments.



What you'll study

From providing students with the core concepts and principles of game development, to then offering an opportunity to subsequently create an exciting and rich portfolio, our curriculum is designed to be adaptable. We give students the flexibility to tailor their education to align with their aspirations, whether it be in a AAA or AA studio, or the indie and freelance sectors.



Future careers

Graduates of Game Development can pursue roles in studios, tech companies, or indie teams, including Game Programmer, Level Designer, Animator, Technical Artist, and QA Tester. Opportunities also exist in VR development, production management, or interactive media design. Many graduates launch indie projects or continue studies in game design, VFX, or digital innovation. These



courses equip you with the skills, creativity, and experience needed to succeed in one of the most dynamic and rapidly evolving industries worldwide.

Apply here



Courses

- Cert HE Game Development ^{FT}
- FdA Game Development ^{FT}
- BA (Hons) Game Development (Top-Up) ^{FT}



Health and Social Care

Our programmes are for people who want to work in health or social care – or you may already be working in the industry, and you are looking to develop your knowledge and skills to progress. These courses attract people of all ages and professional backgrounds ranging from college leavers to more mature students. The demands and requirements of working in this sector mean that anyone working in health and social care should be learning and improving their practice on an ongoing basis.

What you'll study

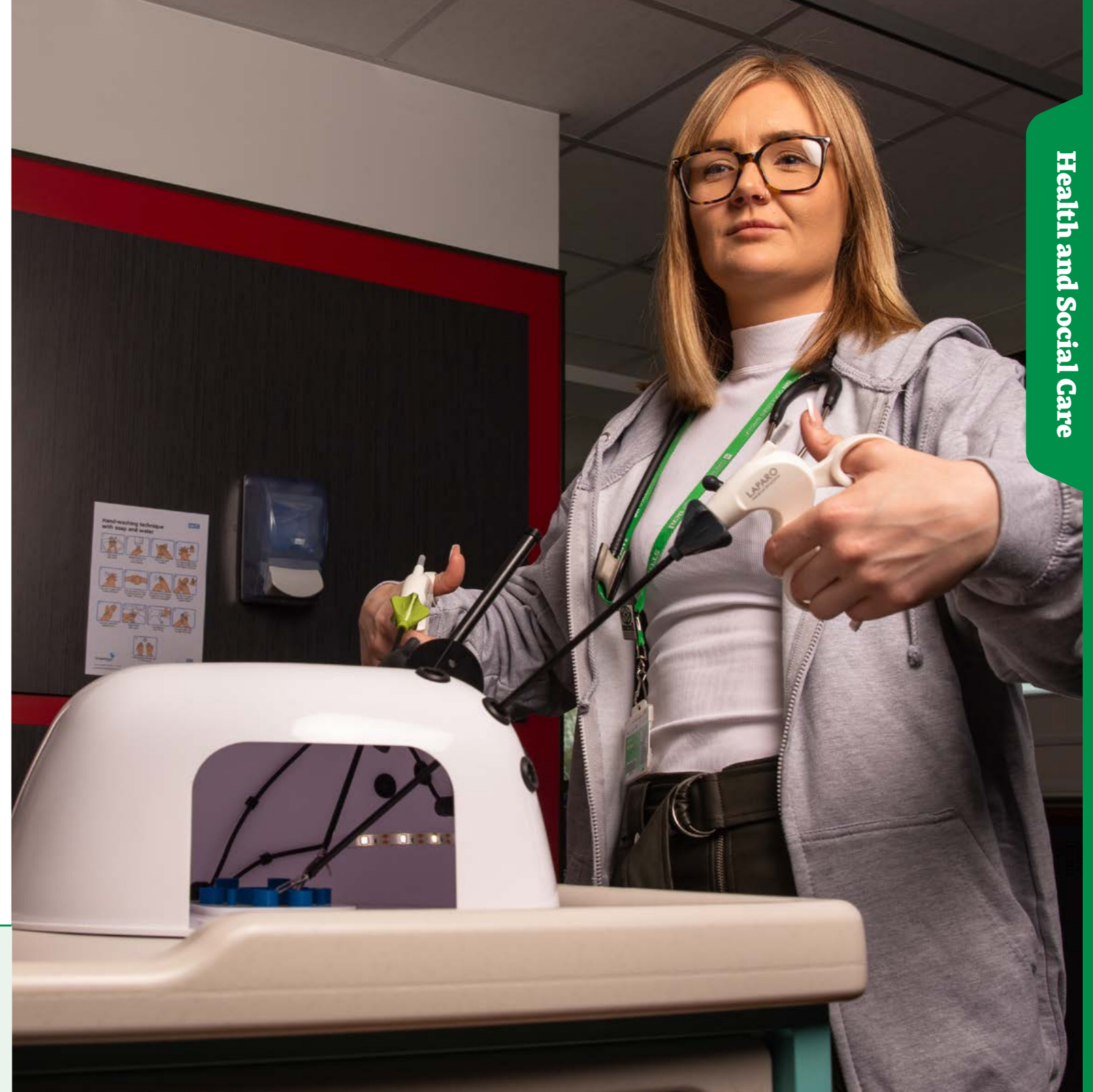
The Cert HE/FdSc/BSc Health and Social Care combines study with practical placements enabling you to develop relationships with employers who provide health and social care services throughout your study. You are assessed in a variety of ways. There are essays, reports, projects, leaflets, presentations, tests, and portfolios. You will also have access to simulated learning activities in the Simulation Suite

where you can work through challenging situations in a safe, simulated environment. We also offer a Level 5 Healthcare Assistant Practitioner Apprenticeship, which will enable you to develop the confidence and competence to take on more responsibility, contribute to high-quality care, and become an integral part of the NHS or wider health and care workforce.



Future careers

Past students have secured work in a range of sectors including statutory health and social care, third (voluntary) and independent sectors, along with students progressing in their existing roles.



Courses

- Cert HE Professional Practice in Health and Social Care ^{FT}
- FdSc Assistant Practitioner Health and Social Care ^{FT}
- L5 Healthcare Assistant Practitioner Apprenticeship Standard ^{PT}
- BSc (Hons) Health and Social Care Studies (Top Up) ^{FT}

Apply here



Medical Bioscience

Are you interested in medicine, science and health related topics? Do current medical issues such as COVID-19 and genetic engineering spark your interest? Do you want to learn more within this field? Then our Medical Bioscience programmes could be just right for you.



What you'll study

The FdSc and BSc Medical Bioscience programmes have a significant number of industry relevant practical lessons and skills are developed in scientific and clinical settings. These support learners to develop practical skills that are required by a variety of roles within the sector.

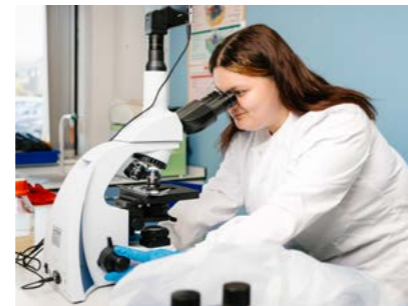


Future careers

Careers leading on from the programme include:

- Analytical Support Chemist
- Technical Support Scientist
- Microbiology Support Scientist

- Process Development Technologist
- Laboratory Assistant
- Senior Laboratory Technician
- Assistant Scientist
- Technical Specialist (Scientist)
- Quality Control Laboratory Assistant
- Laboratory Co-ordinator
- Technical Laboratory Assistant
- Laboratory Analyst
- Laboratory Research Assistant
- Science Teacher
- Medical Writer
- Pharmaceutical Development/ Sales and Charity/Support Work



Apply here



Courses

➤ **FdSc Medical Bioscience**

➤ **BSc Medical Bioscience - Top Up**

Mental Health and Wellbeing

Our Mental Health and Wellbeing programmes offer a comprehensive education to students who are passionate about making a difference in the mental health field. Our courses cover a range of topics, including psychology, counselling and social work, providing students with a strong foundation for a career in mental health and wellbeing.

What you'll study

One unique aspect of our programmes is their practical focus. Our experienced faculty members provide students with hands-on training and real-world experience, ensuring they graduate with the knowledge and skills necessary to make a difference in their careers.

Future careers

Students may progress to Mental Health Nurse training or work in areas including health and social care services across a variety of settings, including specialist dementia units and assisted living facilities. Other roles may include work with public health, suicide prevention, addiction or pastoral care roles in schools and colleges.



Courses

➤ **FdSc Mental Health and Wellbeing** 

➤ **BSc Mental Health & Wellbeing Top Up** 

Apply here 



Psychology

Are you interested in finding out more about yourself and the people around you? Do you find yourself distracted by 'people watching'? Do you think you are in a good position to help others but need more knowledge to do so? The BSc (Hons) Psychology with Criminology may help you to pursue your interests.

What you'll study

Students of Psychology and Criminology develop skills in generating and evaluating evidence, making reasoned arguments and ethical judgements which are useful in many careers. Combining Psychology and Criminology, this course develops intellectual skills required to be an independent learner. Including the ability to gather appropriate and relevant information from a number of quality sources and make an informed judgement about your own behaviour and that of those around you.

Future careers

This course is particularly relevant to people already working in or looking to develop a career within and beyond Psychology. The British Psychological Society (BPS) found that Psychology graduates are readily recruited to a wide range of jobs as well as post-graduate study. Psychology and Criminology students are ideally suited to careers in the police, probation, prison service, security services, local and central government, social work, youth work, public policy, offender charities and more.



Courses

➤ **BSc (Hons) Psychology with Criminology** 

Apply here 



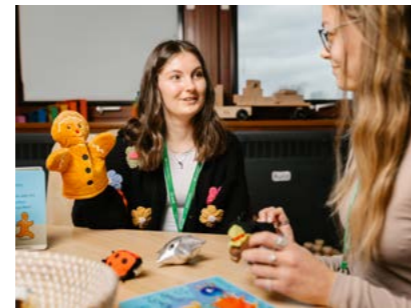
Special Educational Needs, Disability and Inclusion (SENDI)

Our distinctive degrees allow you to develop a career into some of the most rewarding, inspiring and satisfying roles of all – working in special educational needs and disability support.

What you'll study
Ideally suited to existing practitioners supporting children and young adults aged 0-25 with special educational needs or disabilities, we will help you build an in-depth understanding of theories, factors and contexts for Special Educational Needs, Disability and Inclusion (SENDI), and prepare you for roles that can make a genuine difference. You'll study key themes in working with children including safeguarding vulnerable children, working in a multiagency context, global perspectives and theories of development and learning, along with exploring

the challenges of supporting and working with families of children with SENDI.

Future careers
Careers are varied within the SEND sector and students may take several routes depending on their specific aspirations. Many of our graduates wish to work with children and their families within education, health or care sectors, whereas others may progress into posts within local authorities which could involve the development of local strategy and policy.

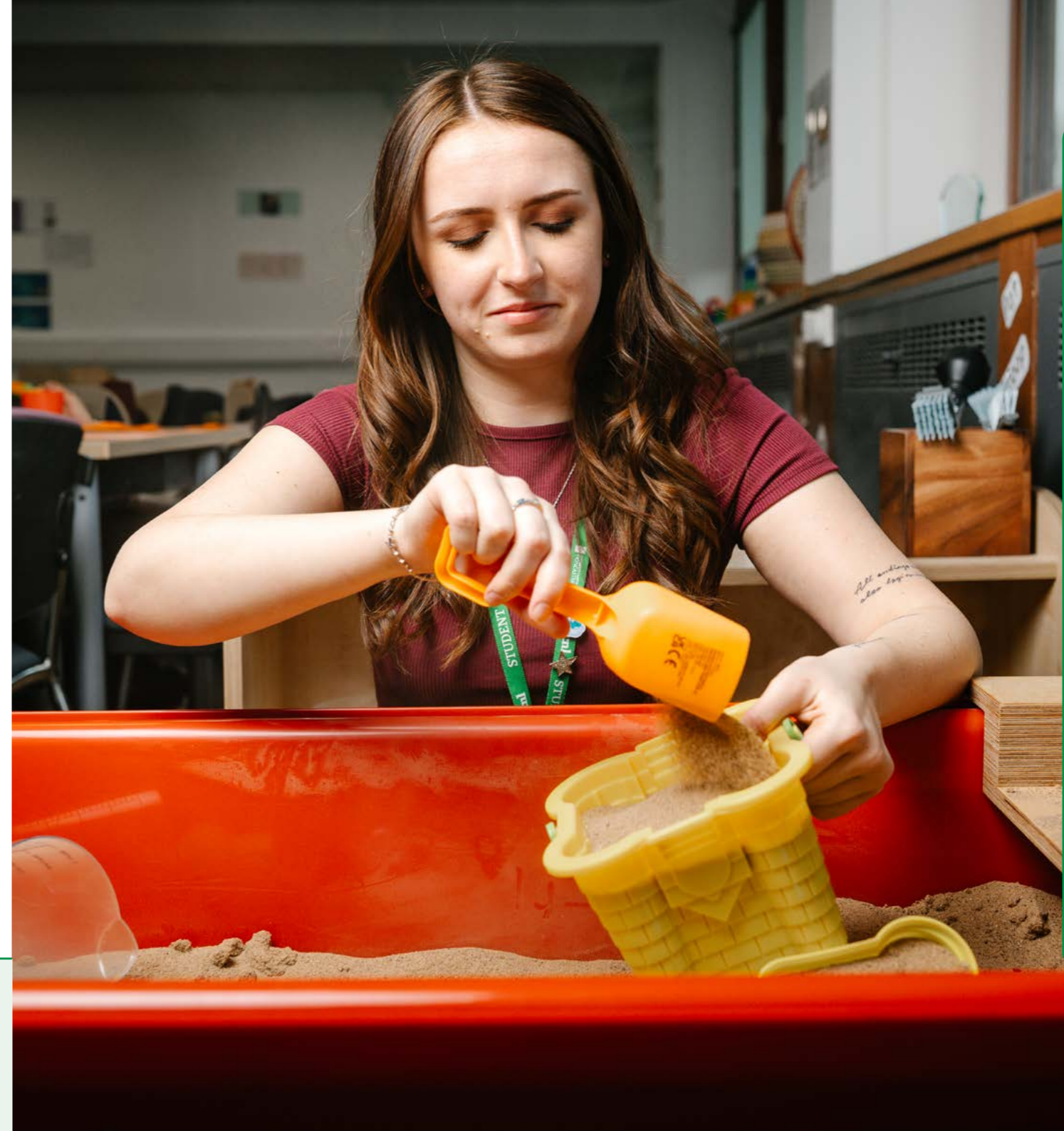


Apply here



Courses

- **FdA in Special Educational Needs, Disability, and Inclusion Distance Learning** FT PT
- **BA (Hons) Special Educational Needs, Disability and Inclusion (Top Up) Distance Learning** FT PT
- **MA Special Educational Needs, Disability and Inclusion - Distance Learning** PT



Social Science

The BA (Hons) Social Science offers you the chance to study locally for a highly respected degree awarded by the University of Lincoln but by living and studying close to home. Dedicated Higher Education facilities together with good access to learning resources means that you don't have to travel far to enjoy a high-quality education. We offer a structured approach to study, which provides a rigorous yet enjoyable undergraduate experience.

What you'll study

The course considers a wide range of contemporary social issues and concerns such as poverty, homelessness, environmental problems and crime with a good balance between theory and evidence. Using the disciplines of criminology, politics, social policy, social theory and research and study skills, the BA (Hons) Social Science considers both the causes of such problems and how they may be tackled. We

expect you to make an impact to the course by giving you the opportunity to develop your own interests and pose your own questions, all in a relaxed but stimulating environment.

Future careers

This course provides a range of skills relevant across a variety of different professions. People who have completed this course have gone on to work in areas including: criminal justice system, including probation,



prisons, police, youth justice, domestic/sexual abuse, social work, mental health, social policy development, politics, immigration, welfare provision, housing, education, support work and voluntary sector.

Apply here



Courses

➤ BA (Hons) Social Science FT PT

➤ Cert HE Understanding Domestic Violence and Sexual Abuse (Subject to Validation) FT

➤ FdA Understanding Domestic Violence and Sexual Abuse (Subject to Validation) FT



Sport and Exercise

Focusing on key knowledge and skills relevant to the health, fitness and sport industry, graduates will be skilled in their relevant area, understanding the key theoretical concepts while being able to successfully apply this knowledge to the prescription, monitoring and review of clients and athletes.

What you'll study

Through extensive engagement in work based and placement opportunities, students will develop an impressive portfolio of experience. Under the guidance and support of a highly skilled and qualified team, this programme also welcomes individuals who are currently working in the health, fitness and sport sectors. Module content is ensured to suit the needs of experienced practitioners wishing to extend and enhance their knowledge and skills.

Future careers

This course provides a range of skills and competencies relevant across a variety of different professions. People who have completed this course have gone on to work in areas including teaching PE (primary, secondary and SEND school), practitioner work (such as strength and conditioning coaches, sports psychologists and performance analysts), as well as returning to higher education to lecture. Some of these opportunities have been developed from work experience provided on the course such as working with the Scunthorpe United FC team, working within schools/colleges and sports coaching companies.



Courses

➤ **BSc (Hons) Sport, Health and Coaching Science** 

Apply  here



Teacher Training (Lifelong Learning)

If you have a passion for a particular subject and think you would enjoy working with young people and adults, helping to shape a positive future for them, then teaching in post-16 further or higher education could be for you. Providing a wide range of opportunities for students looking to start or progress their teacher or trainer career in the post-compulsory sector, we can find a course that will help you realise your ambition.

What you'll study

During your studies you will be challenged with questions, scenarios, and problems as you develop your personal teaching style. You'll gain real, first-hand experience, learning from the people in the roles you want to be in and from those who have been in your shoes. Benefiting from a personalised teacher mentor, we'll help you develop the skills you need for employment.

Future careers

Upon successful completion of one of our courses, you may be eligible to proceed, following a process of professional formation through the Society for Education and training to gain Qualified Teacher Learning and Skills (QTLS) status. This is the full professional status for teachers in the Lifelong Learning Sector.



Courses

- **Cert. Ed. Certificate in Education (Lifelong Learning) (In-Service)** 
- **Certificate in Education (Lifelong Learning) (Pre-Service)**  
- **Professional Graduate Certificate in Education (Lifelong Learning) (Pre-Service)**  
- **Professional Graduate Certificate in Education (Lifelong Learning) (In-Service)** 
- **PGCE Post Graduate Certificate in Education (Lifelong Learning) (Pre-Service)**  
- **PGCE Post Graduate Certificate in Education (Lifelong Learning) (In-Service)** 

Apply here 



Access to HE & Foundation Diplomas

Ready to take the next step towards university or a new career? Our Level 2 and Level 3 Diplomas offer adult learners flexible, supportive routes into higher education — no traditional qualifications needed.

Level 3 Access to HE Diplomas

Our one-year Access to HE Diplomas are nationally recognised and designed to prepare you for university study:

- **Psychology** – Explore human behaviour, cognitive science, and mental health. Ideal for careers in Psychology, Counselling, and Education.
- **Health Science Professions** – Build a strong foundation in health and biological sciences. Perfect for Nursing, Midwifery, and Allied Health degrees.
- **Humanities & Social Sciences (Social Work & Criminal Justice)** – Dive into sociology, criminology, and law. A great route into Social Work, Youth Work, and Criminal Justice fields.

Level 2 Foundation Diplomas

Not quite ready for Level 3? Our foundation courses will build your study skills and subject knowledge:

- **Progression to Further Study in Health Science Professions** – Develop core skills in science and health for further study.
- **Essential Skills for Further Study in Humanities and Social Sciences** – Strengthen your academic writing, critical thinking, and social science knowledge.



Higher Apprenticeships

We are the largest provider of apprenticeships in the area, and we are the first choice for many employers and individuals. You can apply for an apprenticeship either straight after school, during your time at college or starting an apprenticeship once you have finished college.

We offer 'roll on – roll off' apprenticeships for employers which means they can offer an apprenticeship at any time during the year. This means we have vacancies available throughout the year for new apprenticeships to start. You can apply if you are not at college or if you are already on one of our college programmes.

If you don't see what you need, just let us know and we will do our very best to help you.

<https://ucnl.ac.uk/higher-education-apprenticeships/>



Funding your studies

At University Campus North Lincolnshire (UCNL), we make funding your education as straightforward, flexible, and affordable as possible. With a range of financial options and personalised support, we're here to help you feel confident about managing your money while you study.

Let us take care of the financial details, so you can focus on learning, meeting new people, and building your future.

Financial support

We believe that higher education should be accessible to everyone. By planning ahead for tuition fees, living costs, and everyday expenses, you can start your studies with confidence.

Students from England can apply for:

- A Tuition Fee Loan to cover course fees
- A Maintenance Loan to help with living costs

Students from Scotland, Wales, and Northern Ireland can access funding through their respective regional funding bodies.

Loan repayments

Repaying your student loan is simple and stress free. The Student Loans Company collects repayments automatically through the tax system, and you'll only start repaying once you're earning above the relevant income threshold. Payments are made gradually and are based on what you can comfortably afford.

Additional financial support

We also offer a range of bursaries and support packages, which many students are automatically considered for when they apply or during their studies, helping to ease financial pressure even further.

For more information about financial support at UCNL, visit: <https://ucnl.ac.uk/study-with-us/financial-help/>



For full details about student loan repayments, visit: gov.uk/student-finance



How you repay your student loan

Undergraduate students

If you're studying at undergraduate level, your Tuition Fee Loan and Maintenance Loan are combined into one balance. Repayments are taken automatically through the UK tax system, so you don't need to worry about arranging payments yourself.

You'll only start making repayments once you're earning over £25,000 a year. When you reach this threshold, you'll repay 9% of anything you earn above it.

For further details about repayments, visit gov.uk/student-finance

Postgraduate students

If you choose to take out a postgraduate loan, repayments begin once you earn over £21,000 a year. You'll repay 6% of your income above this amount.

If you have both an undergraduate and postgraduate loan, repayments are made at the same time, automatically through the tax system.

Fees

Tuition fees for all courses at UCNL are published on each individual course page on our website, along with clear information about what your fees include.

Fees vary depending on:

- Your fee status (home or international)
- Your level of study (Foundation, Honours, undergraduate, or postgraduate)

We know that managing your finances is an important part of student life. To help you plan with confidence, full details about fees, student loans, and eligibility criteria are available on our website.



How to Apply

Once you've decided which of our courses is for you, submit an application as soon as possible, either by applying directly through our website or via UCAS.

Direct applications

Applying for an undergraduate course directly through our website is a simple process where we aim to respond to you within 48 hours, it's ideal for students who have already decided that we are their first choice. This method avoids UCAS fees and long personal statements, allowing you to tailor your application specifically to the course you wish to study, though you must still ensure you meet the course's entry requirements.

Find out more about direct applications by scanning the QR code: <https://ucnl.ac.uk/study-with-us/apply-directly-through-our-website/>



UCAS applications

Alternatively, you can apply through UCAS, a convenient online platform that lets you apply to multiple institutions, including UCNL. With the option to choose up to five courses or universities, UCAS offers the flexibility to explore different paths while keeping your options open. While there is an application fee, UCAS makes the process simpler by allowing you to manage several applications all in one place, giving you more control over your future if you still visiting different campuses to find your perfect fit.

Commuting to Campus

Our facility, located in the heart of Scunthorpe, is well connected via a wide range of transport options, to ensure that you can enjoy a smooth journey into campus.



The University Campus North Lincolnshire is situated just over 10 minutes by foot from Scunthorpe Train Station, which is connected to cities such as Doncaster and Sheffield. The town's Bus Station is a further 15 minutes away, with services running direct to our campus on Ashby Road.



For further information on Scunthorpe bus timetables and routes, please see the Stagecoach website. <https://www.stagecoachbus.com/promos-and-offers/east-midlands/scunthorpe-services>



Cycling and Parking

In and around UCNL, there are many cycle routes which connect Scunthorpe with nearby towns and villages. Once you're here, we have secure bike storage units that can be accessed by students and staff.



We offer free on-campus parking, both to the front and rear of the campus. Our rear campus parking can only be accessed by students and staff.



Course List

| | |
|--|-----------|
| Animal Welfare Science | 10 |
| ➤ FdSc Animal Welfare Science ^{FT} ^{PT} | 10 |
| ➤ BSc (Hons) Applied Animal Welfare Science Top Up ^{FT} ^{PT} | 10 |
| Business and Management | 12 |
| ➤ FdA in Management ^{FT} | 12 |
| ➤ Level 5 CMI Management & Leadership Diploma ^{PT} | 12 |
| ➤ Chartered Manager Degree Apprenticeship (CMDA) ^{PT} | 12 |
| Construction | 14 |
| ➤ Civil Engineering Senior Technician Apprenticeship Standard ^{PT} | 14 |
| ➤ Construction Quantity Surveying Technician - Apprenticeship Standard ^{PT} | 14 |
| ➤ Construction Site Supervisor Apprenticeship Standard ^{PT} | 14 |
| ➤ Pearson BTEC HNC L4 in Civil Engineering ^{FT} ^{PT} | 14 |
| ➤ Pearson BTEC HNC L4 in Construction Management for England (Construction Site Supervisor) ^{FT} ^{PT} | 14 |
| ➤ Pearson BTEC HNC L4 in Quantity Surveying for England ^{FT} ^{PT} | 14 |
| ➤ Pearson BTEC HNC in Architectural Technology (HTQ) ^{PT} | 14 |
| Counselling | 16 |
| ➤ Cert HE Integrative Counselling ^{FT} | 16 |
| ➤ BA (Hons) Integrative Counselling ^{FT} ^{PT} | 16 |
| ➤ Level 2 Award Introduction to Counselling Skills ^{PT} | 16 |
| ➤ Cert HE Understanding Domestic Violence and Sexual Abuse (Subject to Validation) ^{FT} | 16 |
| ➤ FdA Understanding Domestic Violence and Sexual Abuse (Subject to Validation) ^{FT} | 16 |
| Digital | 18 |
| ➤ HNC Digital Technologies - Software Development & Programming Pathway ^{FT} ^{PT} | 18 |
| ➤ HND Digital Technologies - Software Development & Programming ^{FT} ^{PT} | 18 |
| ➤ HNC Digital Technologies for England Artificial Intelligence (AI) Solutions and Applications ^{FT} ^{PT} | 18 |
| Education and Early Childhood Studies | 20 |
| ➤ FdA Children's Learning and Development Distance Learning ^{FT} | 20 |
| ➤ FdA Education and Early Childhood Studies ^{FT} ^{PT} | 20 |
| ➤ BA (Hons) Early Childhood Studies Top Up Distance Learning ^{FT} | 20 |
| ➤ BA (Hons) Education and Early Childhood Studies Top Up ^{FT} ^{PT} | 20 |
| ➤ MA Education and Early Childhood Studies ^{PT} | 20 |
| Engineering | 22 |
| ➤ HNC Electrical & Electronic Engineering for England (HTQ) ^{FT} ^{PT} | 22 |
| ➤ HNC Engineering for England (HTQ) ^{FT} ^{PT} | 22 |
| ➤ HNC Mechanical Engineering for England (HTQ) ^{FT} ^{PT} | 22 |
| ➤ Level 4 Basic Pneumatic Control Systems ^{FT} | 22 |
| ➤ Level 4 Electro-Pneumatic Control Systems ^{FT} | 22 |
| ➤ Level 4 Introduction to Automation ^{FT} | 22 |
| ➤ Level 4 Introduction to Solar Energy ^{FT} | 22 |

| | |
|--|-----------|
| ➤ Level 4 Introduction to Wind Energy ^{FT} | 22 |
| ➤ Pearson BTEC Level 4 Higher National Certificate in Operations Engineering for England ^{FT} | 22 |
| ➤ HND Electrical & Electronic Engineering for England (HTQ) ^{PT} | 22 |
| ➤ HND Engineering for England (HTQ) ^{FT} | 22 |
| ➤ HND Mechanical Engineering for England (HTQ) ^{PT} | 22 |
| ➤ Engineering Manufacturing Technician - Apprenticeship Standard | 22 |
| Games Development | 24 |
| ➤ Cert HE Game Development ^{FT} | 24 |
| ➤ FdA Game Development ^{FT} | 24 |
| ➤ BA (Hons) Game Development (Top-Up) ^{FT} | 24 |
| Health and Social Care | 26 |
| ➤ Cert HE Professional Practice in Health and Social Care ^{FT} | 26 |
| ➤ FdSc Assistant Practitioner Health and Social Care ^{FT} | 26 |
| ➤ L5 Healthcare Assistant Practitioner Apprenticeship Standard ^{PT} | 26 |
| ➤ BSc (Hons) Health and Social Care Studies (Top Up) ^{FT} | 26 |
| Medical Bioscience | 28 |
| ➤ FdSc Medical Bioscience ^{FT} ^{PT} | 28 |
| ➤ BSc Medical Bioscience - Top Up ^{FT} | 28 |
| Mental Health and Wellbeing | 30 |
| ➤ FdSc Mental Health and Wellbeing ^{FT} | 30 |
| ➤ BSc Mental Health & Wellbeing Top Up ^{FT} | 30 |
| Psychology | 32 |
| ➤ BSc (Hons) Psychology with Criminology ^{FT} | 32 |
| Special Educational Needs, Disability and Inclusion (SENDI) | 34 |
| ➤ FdA in Special Educational Needs, Disability, and Inclusion Distance Learning ^{FT} ^{PT} | 34 |
| ➤ BA (Hons) Special Educational Needs, Disability and Inclusion (Top Up) Distance Learning ^{FT} ^{PT} | 34 |
| ➤ MA Special Educational Needs, Disability and Inclusion - Distance Learning ^{PT} | 34 |
| Social Science | 36 |
| ➤ BA (Hons) Social Science ^{FT} ^{PT} | 36 |
| ➤ Cert HE Understanding Domestic Violence and Sexual Abuse (Subject to Validation) ^{FT} | 36 |
| ➤ FdA Understanding Domestic Violence and Sexual Abuse (Subject to Validation) ^{FT} | 36 |
| Sport and Exercise | 38 |
| ➤ BSc (Hons) Sport, Health and Coaching Science ^{FT} | 38 |
| Teacher Training (Lifelong Learning) | 40 |
| ➤ Cert. Ed. Certificate in Education (Lifelong Learning) (In-Service) ^{PT} | 40 |
| ➤ Certificate in Education (Lifelong Learning) (Pre-Service) ^{FT} ^{PT} | 40 |
| ➤ Professional Graduate Certificate in Education (Lifelong Learning) (Pre-Service) ^{FT} ^{PT} | 40 |
| ➤ Professional Graduate Certificate in Education (Lifelong Learning) (In-Service) ^{PT} | 40 |
| ➤ PGCE Post Graduate Certificate in Education (Lifelong Learning) (Pre-Service) ^{FT} ^{PT} | 40 |
| ➤ PGCE Post Graduate Certificate in Education (Lifelong Learning) (In-Service) ^{PT} | 40 |



Got a question?

You're bound to have lots of questions about studying in Scunthorpe. Whatever you need to know about, our course enquiries team are here to help you find the answers.

The team can be contacted at enquiries@ucnl.ac.uk or via ucnl.ac.uk/contact-us

The UCAS Code for DN Colleges Group is: **N64**
Campus Code: **N (University Campus North Lincolnshire)**

Connect with us

University Campus North Lincolnshire,
Ashby Road, Scunthorpe, DN16 1BU

01724 294125
enquiries@ucnl.ac.uk
ucnl.ac.uk

Our website



Follow us



UCNLofficial



UCNL



UCNL_official

DN COLLEGES GROUP

University Campus North Lincolnshire is an operating division of DN Colleges Group, a Further Education Corporation within the South Yorkshire, Greater Lincolnshire and Humber Region.

All information correct at time of print, May 2026